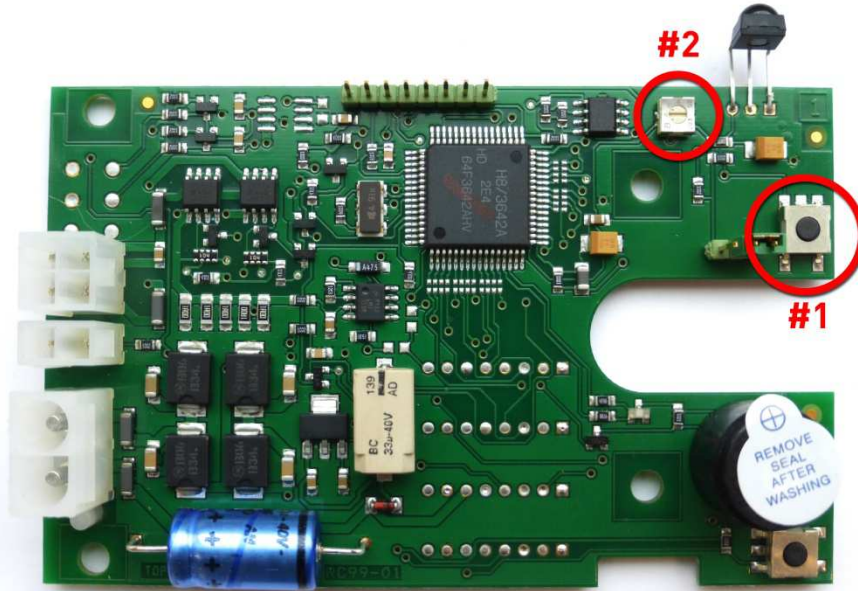


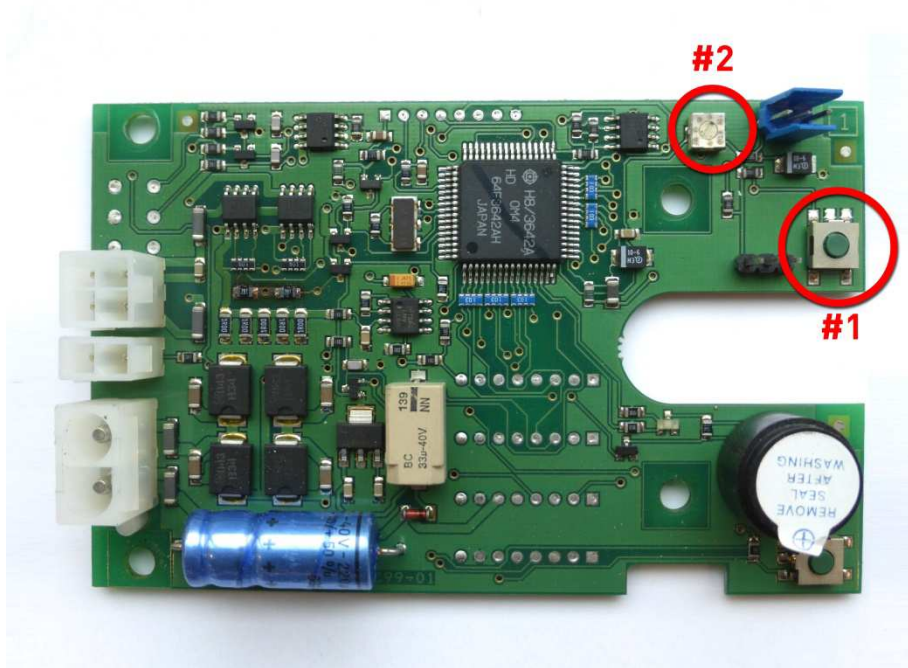
Circuit board *with* receiver eye

item code 10861



Circuit board *without* receiver eye – needs an external eye

item code 10860



## Erasing the code

1. The circuit board is mounted below the motor, in the display
2. Locate the little button (#1)
3. Push it for 5 seconds
4. The red led will light up
5. Push the same button again
6. The red led will go out
7. The frequency has been erased.

## (Re) programming the code

1. The circuit board is mounted below the motor, in the display
2. Locate the little button (#1)
3. Push it for 1 second
4. The green led will light up
5. Point the remote control to the receiver eye on the top of the base and push the button of the remote
6. The red light will blink – the frequency has been received.
7. Acceptance signal will be one or two beeps.
8. After the last beep, push the same button again. The green led will go out.
9. The frequency has been stored.

## Adjusting the timer

1. The circuit board is mounted below the motor, in the display
2. Program the timer by turning the screw (#2)
3. When you turn it clockwise , the display will stay open for longer period
4. When turned all the way, against the clock, it will stay open for 10 seconds
5. When turned all the way, clockwise, it will stay open for 12,5 minutes



Timer switch at the back of the base

0 = The timer is switched off

1 = The timer is switched on