

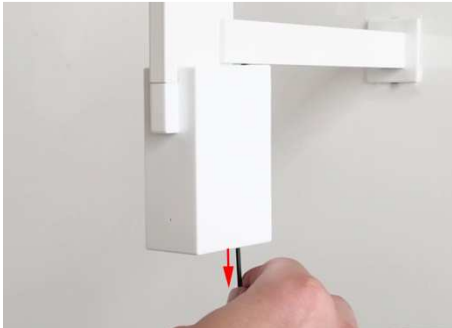


APERTURA DE EMERGENCIA

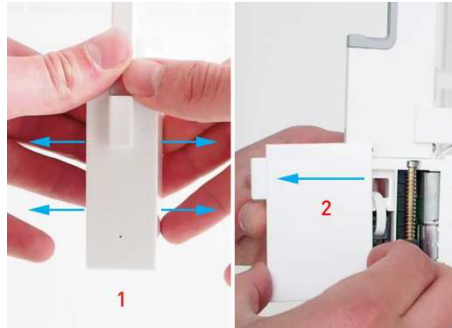
Herramientas  
necesarias:



- Llave hexagonal de 2 mm



1. Retire el tornillo de la parte inferior del módulo de cerradura



2. Deslice la cubierta de la unidad hacia afuera. Coloque su pulgar en la parte delantera y abra ligeramente la parte inferior para poder deslizarla.



3. Gire el eje (husillo) para abrir y cerrar manualmente la columna

### SAVE THESE INSTRUCTIONS !

#### MAINTENANCE INSTRUCTIONS

Instructions for cleaning and user maintenance operations:

1. The exterior of a SECURE DISPLAY SYSTEM may only be cleaned with a non-static brush.
2. The SECURE DISPLAY SYSTEM has no user serviceable parts. All malfunctioning or damaged components are to be replaced by a service representative duly authorized by Top Vision Group BV or an official Top Vision dealer.

#### INTENDED USE

1. The intended use of the Secure Display System is to display eyewear frames and sunglasses.
2. This product is for commercial use only.



**Head office - The Netherlands**

Top Vision Group B.V.  
Waarderweg 58  
2031 BP Haarlem  
The Netherlands

Tel: +31 23 517 66 77  
Fax: +31 23 531 02 41  
info@topvisiongroup.com  
www.topvisiongroup.com

**Australia**

Saata PTY LTD  
2 Lobelia Drive  
WA 6070 Darlington  
Australia

Tel: + 61 89 299 71 00  
Fax: + 61 89 299 71 00  
saata1@bigpond.com  
www.topvisiongroup.com

**Deutschland**

Top Vision Deutschland  
Schönbornstrasse 1a  
D-54295 Trier  
Deutschland

Tel: +49 651 99 53 605  
Fax: +49 651 99 53 629  
info@topvisiongroup.de  
www.topvisiongroup.de

**Österreich**

ShopCrea  
Kremsmüllerstrasse 9  
A-4641 Steinhaus bei Wels  
Österreich

Tel: +43 7242 63375  
Fax: +43 7242 63375-9  
office@shopcrea.com

**United States of America**

Ennco Display Systems, Inc.  
6975 176th Ave NE - Suite 350  
Redmond, WA 98052

Tel: (425) 883-1650  
Toll free: (800) 833-6626  
accounting@ennco.com  
www.ennco.com

**België**

Shop Concept  
Oeyvaersbosch 11  
2630 Aartselaar  
België

Tel: +32 3 877 56 86  
shopconcept@scarlet.be  
www.shopconcept.be  
www.topvisiongroup.nl  
www.topvisiongroup.fr

**España**

Creaciones RTC, S.L.  
Complementos para óptica  
Aulestia i Pijoan, 15  
08012 Barcelona, España

Tel: +34 93 237 74 76  
Fax: +34 93 415 13 13  
info@rtc-optica.com  
www.rtc-optica.com  
www.topvisiongroup.es

**South Africa**

Ebony Optical  
Ebony House | 39 Hilton Avenue  
Hilton | 3245 | KwaZulu-Natal  
South Africa

Tel: +27 33 343 6402 | 0861 326696  
Fax: +27 860 519 3189  
sales@ebonyoptical.com  
www.ebonyoptical.com

**Venezuela**

Optica Caroni, C.A.  
Calle Santa Clara  
Edificio Bertolini Piso #2  
Boleita Norte, Caracas  
Venezuela

Tel: +58 212 2384233  
info@opticacaroni.com

**Canada**

SPACELINE  
171 Joseph Carrier  
Vaudreuil QC  
J7V 5V5

Tel : +1 450 424 7500  
Fax : +1 450 424 4142  
contact@spaceline-cables.com  
www.spaceline-cables.com  
www.topvisiongroup.com

**France**

Top Vision Group France  
48 rue Montmartre  
75002 Paris  
France

Tel: +33 1 43 44 76 11  
Fax: + 33 1 43 45 81 40  
info@topvisiongroup.fr  
www.topvisiongroup.fr

**Suomi**

Velikuusamo Oy  
Sauvapolku 5  
95600 Ylitornio  
Suomi

Tel: +358 40 58 64 951  
Fax: +358 16 57 42 07  
office@velikuusamo.fi

**Danmark**

Top Vision DK  
Bellisvej 14  
DK-85000 Grenaa  
Danmark

Tel: +45 863 00 800  
info@topvisiongroup.dk  
www.topvisiongroup.com

**Italia**

Top Solutions S.r.l.  
Via P.Giuliani 95  
21047 Saronno VA  
Italia

Tel: +39 02 99768769  
Cell: +39 333 3784464  
info@top-solutions.it  
www.top-solutions.it  
www.topvisiongroup.it

**United Kingdom**

Top Vision UK  
Vision House - Gatehouse Lane  
Framfield E. Sussex  
TN22 5RS England

Tel: +44 1825 89 1163  
Fax: +44 870 840 2379  
uk@topvisiongroup.com  
www.topvisiongroup.com