

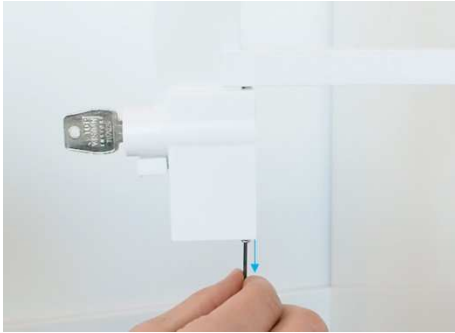


APERTURA DE EMERGENCIA

Herramientas
necesarias:



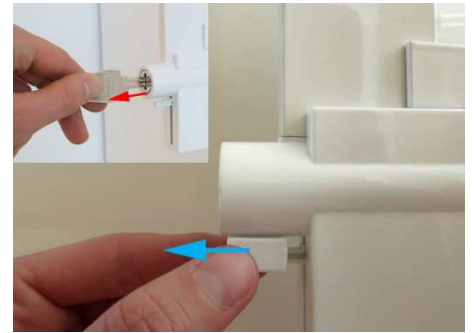
- Llave hexagonal de 2 mm
- Destornillador PH1



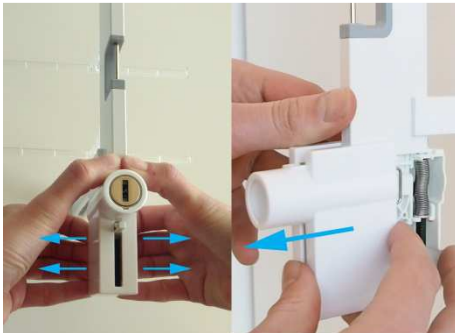
1. Retire el tornillo de la parte inferior del módulo de cerradura



2. Retire el tornillo de la parte inferior del deslizador de cierre



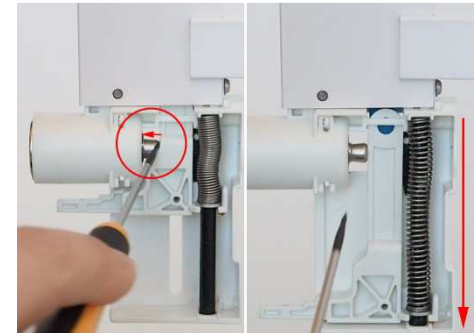
3. Retire la cubierta del deslizador de cierre



4. Deslice la cubierta de la unidad hacia afuera. Coloque su pulgar en la parte delantera y abra ligeramente la parte inferior para poder deslizarla.



5. Retire el anillo de seguridad metálico



6. Empuje un poco la palanca del deslizador de cierre de manera que la columna se abra

SAVE THESE INSTRUCTIONS !

MAINTENANCE INSTRUCTIONS

Instructions for cleaning and user maintenance operations:

1. The exterior of a SECURE DISPLAY SYSTEM may only be cleaned with a non-static brush.
2. The SECURE DISPLAY SYSTEM has no user serviceable parts. All malfunctioning or damaged components are to be replaced by a service representative duly authorized by Top Vision Group BV or an official Top Vision dealer.

INTENDED USE

1. The intended use of the Secure Display System is to display eyewear frames and sunglasses.
2. This product is for commercial use only.



Head office - The Netherlands

Top Vision Group B.V.
Waarderweg 58
2031 BP Haarlem
The Netherlands

Tel: +31 23 517 66 77
Fax: +31 23 531 02 41
info@topvisiongroup.com
www.topvisiongroup.com

Australia

Saata PTY LTD
2 Lobelia Drive
WA 6070 Darlington
Australia

Tel: + 61 89 299 71 00
Fax: + 61 89 299 71 00
saata1@bigpond.com
www.topvisiongroup.com

Deutschland

Top Vision Deutschland
Schönbornstrasse 1a
D-54295 Trier
Deutschland

Tel: +49 651 99 53 605
Fax: +49 651 99 53 629
info@topvisiongroup.de
www.topvisiongroup.de

Österreich

ShopCrea
Kremsmüllerstrasse 9
A-4641 Steinhaus bei Wels
Österreich

Tel: +43 7242 63375
Fax: +43 7242 63375-9
office@shopcrea.com

United States of America

Ennco Display Systems, Inc.
6975 176th Ave NE - Suite 350
Redmond, WA 98052

Tel: (425) 883-1650
Toll free: (800) 833-6626
accounting@ennco.com
www.ennco.com

België

Shop Concept
Oeyvaersbosch 11
2630 Aartselaar
België

Tel: +32 3 877 56 86
shopconcept@scarlet.be
www.shopconcept.be
www.topvisiongroup.nl
www.topvisiongroup.fr

España

Creaciones RTC, S.L.
Complementos para óptica
Aulestia i Pijoan, 15
08012 Barcelona, España

Tel: +34 93 237 74 76
Fax: +34 93 415 13 13
info@rtc-optica.com
www.rtc-optica.com
www.topvisiongroup.es

South Africa

Ebony Optical
Ebony House | 39 Hilton Avenue
Hilton | 3245 | KwaZulu-Natal
South Africa

Tel: +27 33 343 6402 | 0861 326696
Fax: +27 860 519 3189
sales@ebonyoptical.com
www.ebonyoptical.com

Venezuela

Optica Caroni, C.A.
Calle Santa Clara
Edificio Bertolini Piso #2
Boleita Norte, Caracas
Venezuela

Tel: +58 212 2384233
info@opticacaroni.com

Canada

SPACELINE
171 Joseph Carrier
Vaudreuil QC
J7V 5V5

Tel : +1 450 424 7500
Fax : +1 450 424 4142
contact@spaceline-cables.com
www.spaceline-cables.com
www.topvisiongroup.com

France

Top Vision Group France
48 rue Montmartre
75002 Paris
France

Tel: +33 1 43 44 76 11
Fax: + 33 1 43 45 81 40
info@topvisiongroup.fr
www.topvisiongroup.fr

Suomi

Velikuusamo Oy
Sauvapolku 5
95600 Ylitornio
Suomi

Tel: +358 40 58 64 951
Fax: +358 16 57 42 07
office@velikuusamo.fi

Danmark

Top Vision DK
Bellisvej 14
DK-85000 Grenaa
Danmark

Tel: +45 863 00 800
info@topvisiongroup.dk
www.topvisiongroup.com

Italia

Top Solutions S.r.l.
Via P.Giuliani 95
21047 Saronno VA
Italia

Tel: +39 02 99768769
Cell: +39 333 3784464
info@top-solutions.it
www.top-solutions.it
www.topvisiongroup.it

United Kingdom

Top Vision UK
Vision House - Gatehouse Lane
Framfield E. Sussex
TN22 5RS England

Tel: +44 1825 89 1163
Fax: +44 870 840 2379
uk@topvisiongroup.com
www.topvisiongroup.com